

National Highways

A14 Junction 47a - 49

Stakeholder newsletter

Welcome to the March edition of the A14 junction 47a to junction 49 concrete road scheme newsletter.

What we've done so far

Despite higher than average rainfall over the winter months, we've continued to make great progress with reconstruction of the westbound carriageway of the A14.

Thanks to our effective water management measures, we were able to prevent flooding on site. However, the wet weather has created challenges for laying the foundation layer of the carriageway, which is particularly sensitive to weather conditions.

Despite this, we remain committed to delivering high-quality work while ensuring the safety of our team and the surrounding environment. We are still currently on track to finish our work this summer.

Progress to date:

- **Westbound Lane 2**
We have completed 66% of the base foundation layer and 44% of the first layer of asphalt. Additionally, we've successfully installed all of the new slot drains.
- **Westbound Carriageway**
We've dug out 84% (16,193 tons) of the existing concrete road and removed 63% (11,440 tons) of surplus spoil.

New signage

We've now installed some new signs (*right*) which are displayed in both directions on the A14 scheme.

These signs currently display the percentage of construction activities completed on the scheme to date. The percentage currently displayed is due to be updated at the beginning of April.



Above: New base foundation layer and slot drain on the westbound carriageway



What's next?

In the coming weeks, we'll begin removing the remaining concrete road on the westbound carriageway, and excavating the surplus soil as we push towards completing the project in the summer.

Once the westbound carriageway reconstruction is complete, we'll return to the eastbound carriageway in summer 2024 to apply the finished surface layer.

The carriageway is still reduced to one lane in both directions as we work, and the speed limit remains at 50mph to ensure the safety of our workers and other road users.

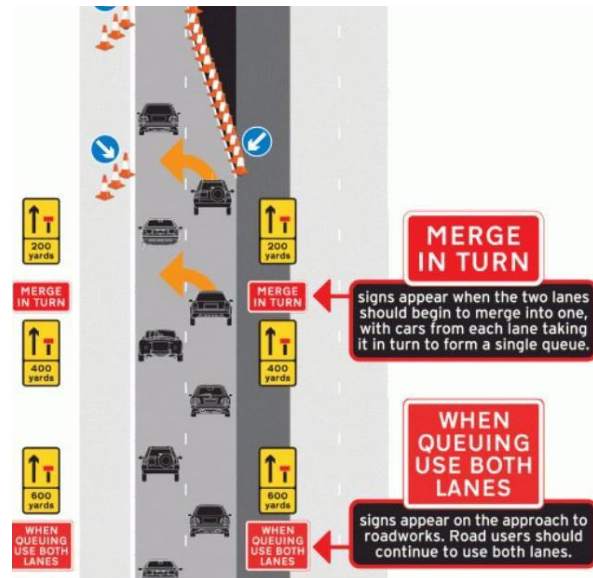


Above: Working at night means we can continue our progress towards reconstructing this stretch of the A14 road

Traffic control

Drivers are encouraged to use all lanes on the approach to the roadworks to maximise the flow of traffic and reduce congestion.

We encourage all drivers to correctly “merge in turn” as shown in the following diagram:

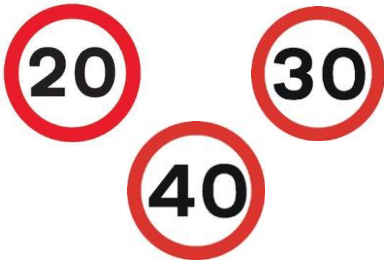


This can help significantly reduce the overall length of queuing traffic, and the risk of disruption and tailbacks at junctions.

We're aware of concerns from local residents regarding some motorists using local roads to avoid the A14. Not only do local roads have lower speed restrictions, they aren't meant for high volumes of traffic, and they often have weight restrictions in place. It can also lead to more congestion, increasing the risk of accidents for both motorists and pedestrians. With this in mind, we ask drivers not to 'rat run', as this can impact local communities.

We're continuing to work closely with Suffolk County Council and Suffolk Police to consider further actions that can be introduced to prevent the rat running through local villages.

Temporary reduced speed limits remain in place on a number of local roads, which are enforceable by Suffolk Police.



All temporary speed limit reductions will be removed once the A14 junction 47a to junction 49 reconstruction project is completed in summer 2024.

Please report any damage to verges directly to Suffolk County Council on 0345 606 6171 or using their online [Highways reporting tool](#).

Drinkwater Village Hall car park repair

We're currently working with Drinkwater Village Hall to repair potholes in their community car park and supply some lockable cabinets to assist with storage for Drinkstone Village Archive Group. These cabinets will preserve and keep safe records about life in the village. Some records date back to 275 years ago. We look forward to sharing progress on this in our future updates.

If you're a member of a local community group that needs support with work you do in the local community, please contact Ruth via email at A14J47J49CCC@sisk.co.uk.

A14 junction 43 (Bury St Edmunds) to 47a (Woolpit) Resurfacing Scheme

In the coming weeks, we will be carrying out resurfacing work and refreshing road markings on the A14 between junction 43 (Bury St Edmunds) to 47a (Woolpit).

This will include new road markings and studs. Once complete, drivers will benefit from a safer and smoother road surface.

The work will be carried out in two phases. Phase 1 will begin on 15 April. Phase 2 is planned for autumn 2024.

Work will be done overnight between 8pm and 6am on weeknights only, weather conditions permitting.

For more information about the scheme, you can visit the dedicated scheme webpage: <https://nationalhighways.co.uk/our-roads/east/a14-junction-43-bury-st-edmunds-to-47a-woolpit-resurfacing/>

Or alternatively, you can go and chat to the team in person at **Jubilee Hall, Blackthorne Community Centre, Blackthorne Road, Elmswell, IP30 9UH from 1pm to 7pm on Thursday 28 March.**

We're working together to minimise disruption to drivers and local residents.



Width restrictions

During the contraflow, vehicles with an overall width exceeding 3.5m will be unable to travel through the roadworks.

Any loads wider than 3m must give advance notification to Suffolk County Council and receive consent. See

www.suffolk.gov.uk/roads-and-transport/lorry-management/apply-to-move-abnormal-loads

Lend a paw, Bin your litter

Litter not only poses a threat to wildlife, it looks unsightly, puts our people at risk when they collect it and diverts time and money that's better spent on improving the road network.

For any litter you have, please find a bin or take it home with you.

We'll continue to work with the local authorities to ensure our roads stay tidy and litter-free.

Find out more about our Lend a paw campaign on our website:

<https://nationalhighways.co.uk/our-work/environment/bin-your-litter/>.



Text Message Alert Service

We've set up a free text message service to keep drivers informed, via text message, about incidents that occur within our roadworks.

You can sign up for this service by sending your mobile number to:

ConcreteRoadsEastA14@nationalhighways.co.uk

Please reference the 'A14 junction 47a Haughley to junction 49 Tothill SMS service' in the subject of your email.

You can opt out at any time by contacting us at the same email address.

Tell us what you think

We'd like to hear what you think about the information we send to you. Please spend a few minutes completing our online questionnaire by visiting:

<https://forms.office.com/e/TC4RYq9bJk>



Get in touch with us

You can visit our webpage and sign up for updates about the scheme at www.nationalhighways.co.uk/A14Haughley

If you'd like more information about our work, then please call the 24/7 National Highways Customer Contact Centre on 0300 123 5000, or email info@nationalhighways.co.uk