

Sheet 2
Sheet 1

PRIVATE DRIVE

PRIVATE DRIVE

- 8No Acer campestre 10%
- 8No Cornus sanguinea 10%
- 8No Corylus avellana 10%
- 43No Crataegus monogyna 50%
- 8No Euonymus europaeus 10%
- 8No Prunus spinosa 10%

- 2No Acer campestre 10%
- 2No Cornus sanguinea 10%
- 2No Corylus avellana 10%
- 14No Crataegus monogyna 50%
- 2No Euonymus europaeus 10%
- 2No Prunus spinosa 10%

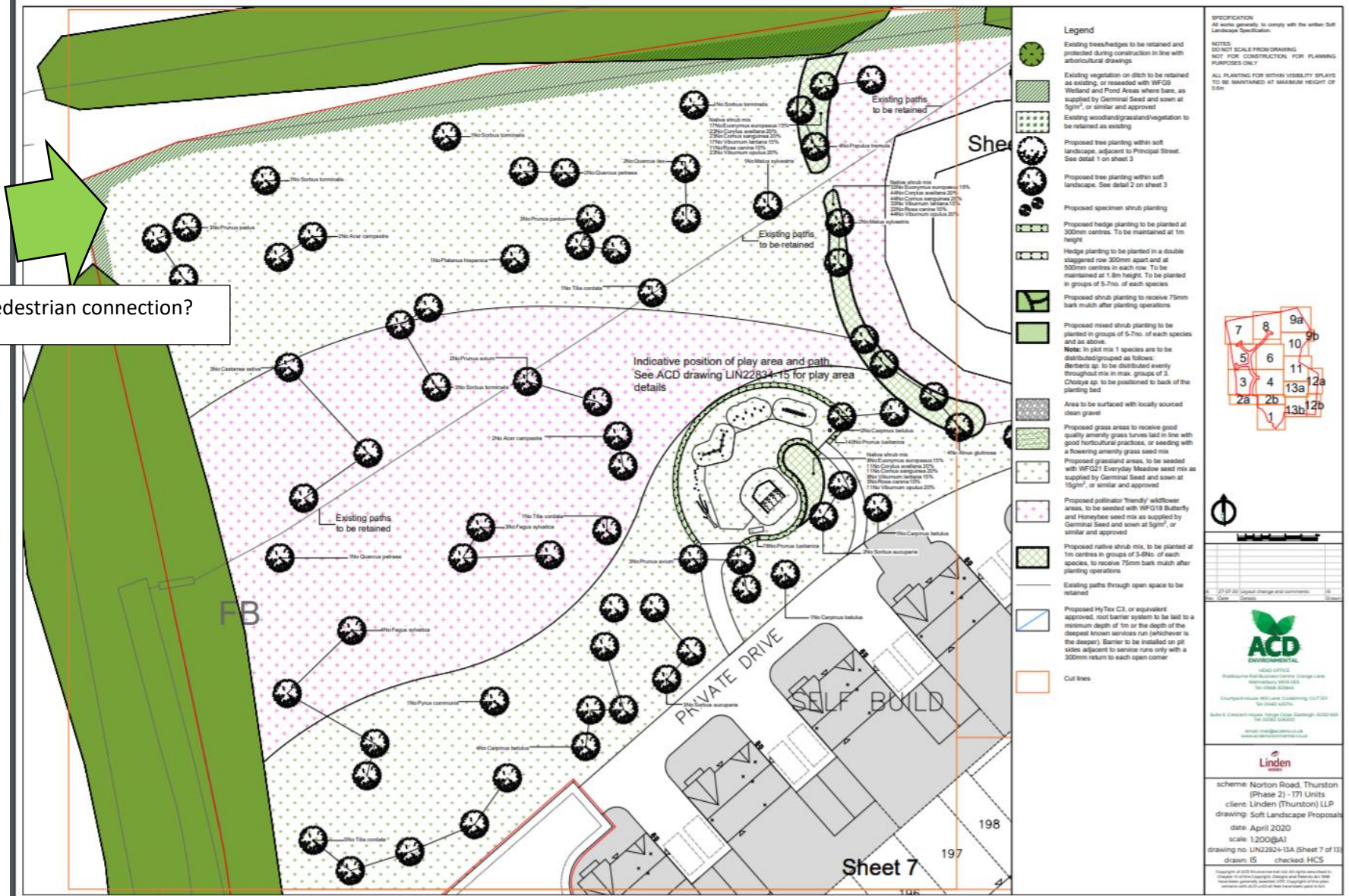
- 29No Euonymus fortunei 'Emerald 'n' Gold'
- 14No Euonymus fortunei 'Emerald Gaiety'
- 22No Genista lydia
- 22No Hebe albicans 'Red Edge'
- 29No Lonicera pileata
- 29No Viburnum davidii



PHASE2: Linden Homes Norton Road YET TO BE DECIDED

Legend needs to state whether bold green = retained flora

Possible pedestrian connection?

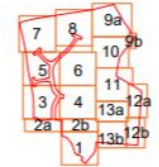


Legend

- Existing trees/hedges to be retained and protected during construction in line with architectural drawings.
- Existing vegetation on ditch to be retained as existing, or reseeded with WFG Wetland and Pond Areas where bare, as supplied by Geminal Seed and sown at 5g/m², or similar and approved.
- Existing woodland/grassland/vegetation to be retained as existing.
- Proposed tree planting within soft landscape, adjacent to Principal Street. See detail 1 on sheet 3.
- Proposed tree planting within soft landscape. See detail 2 on sheet 3.
- Proposed specimen shrub planting.
- Proposed hedge planting to be planted at 300mm centres. To be maintained at 1m height.
- Hedge planting to be planted in a double staggered row 300mm apart and at 500mm centres in each row. To be maintained at 1.8m height. To be planted in groups of 5-7no. of each species.
- Proposed shrub planting to receive 75mm bark mulch after planting operations.
- Proposed mixed shrub planting to be planted in groups of 5-7no. of each species and as above.
Note: In plot mix 1 species are to be distributed/grouped as follows:
Sternis sp. to be distributed evenly through mix in max. groups of 3.
Choysya sp. to be positioned to back of the planting bed.
- Area to be surfaced with locally sourced clean gravel.
- Proposed grass areas to receive good quality amenity grass sown laid in line with good horticultural practices, or seeding with a flowering amenity grass seed mix.
- Proposed grassland areas, to be seeded with WFG21 Everday Meadow seed mix as supplied by Geminal Seed and sown at 15g/m², or similar and approved.
- Proposed pollinator 'friendly' wildflower areas, to be seeded with WFG18 Butterfly and Honeybee seed mix as supplied by Geminal Seed and sown at 5g/m², or similar and approved.
- Proposed native shrub mix, to be planted at 1m centres in groups of 3-6no. of each species, to receive 75mm bark mulch after planting operations.
- Existing paths through open space to be retained.
- Proposed Hy Tex C3, or equivalent approved, root barrier system to be laid to a minimum depth of 1m or the depth of the deepest known services run (whichever is the deeper). Barrier to be installed on pit sides adjacent to service runs only with a 300mm return to each open corner.
- Cut lines.

SPECIFICATION

All work generally, to comply with the written Soft Landscape Specification.
NOTES:
DO NOT SCALE FROM DRAWING
NOT FOR CONSTRUCTION, FOR PLANNING PURPOSES ONLY
ALL PLANTING FOR WITHIN VISIBILITY SPLAYS TO BE MAINTAINED AT MAXIMUM HEIGHT OF 2.0m



Revisions	
No.	Description

ACD ENVIRONMENTAL
HEAD OFFICE
Redburn Road Business Centre, Glasgow, East
Midlothian, EH10 2JG
Tel: 01463 232222
www.acdenv.com

Linden
scheme Norton Road, Thurston
(Phase 2) - 171 Units
client: Linden (Thurston) LLP
drawing: Soft Landscape Proposals
date: April 2020
scale: 1:200@A1
drawing no: LN22824-13A (Sheet 7 of 13)
drawn: IS checked: HCS



Sheet 7

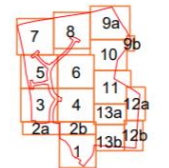
Sheet 5
Sheet 3

- Legend**
- Existing trees/hedges to be retained and protected during construction in line with arboricultural drawings
 - Existing vegetation on ditch to be retained as existing, or reseeded with WF09 Wetland and Pond Areas where bare, as supplied by Germinall Seed and sown at 5g/m², or similar and approved
 - Existing woodland/grassland/vegetation to be retained as existing
 - Proposed tree planting within soft landscape, adjacent to Principal Street. See detail 1 on sheet 3
 - Proposed tree planting within soft landscape. See detail 2 on sheet 3
 - Proposed specimen shrub planting
 - Proposed hedge planting to be planted at 300mm centres. To be maintained at 1m height
 - Hedge planting to be planted in a double staggered row 300mm apart and at 500mm centres in each row. To be maintained at 1.8m height. To be planted in groups of 5-7no. of each species
 - Proposed shrub planting to receive 75mm bark mulch after planting operations
 - Proposed mixed shrub planting to be planted in groups of 5-7no. of each species and as above.
Note: to plant mix 1 species are to be distributed/grouped as follows:
Berberis sp. to be distributed evenly throughout mix in max. groups of 3.
Choysya sp. to be positioned to back of the planting bed
 - Area to be surfaced with locally sourced clean gravel
 - Proposed grass areas to receive good quality amenity grass turves laid in line with good horticultural practices, or seeding with a flowering amenity grass seed mix
 - Proposed grassland areas, to be seeded with WFQ21 Everyday Meadow seed mix as supplied by Germinall Seed and sown at 15g/m², or similar and approved
 - Proposed pollinator 'friendly' wildflower areas, to be seeded with WFQ18 Butterfly and Honeybee seed mix as supplied by Germinall Seed and sown at 5g/m², or similar and approved
 - Proposed native shrub mix, to be planted at 1m centres in groups of 3-4no. of each species, to receive 75mm bark mulch after planting operations
 - Existing paths through open space to be retained
 - Proposed HyTex C3, or equivalent approved, root barrier system to be laid to a minimum depth of 1m or the depth of the deepest known services run (whichever is the deeper). Barrier to be installed on pit sides adjacent to service runs only with a 300mm return to each open corner
 - Cut lines

SPECIFICATION
All works generally, to comply with the written Soft Landscape Specification.

NOTES
DO NOT SCALE FROM DRAWING
NOT FOR CONSTRUCTION. FOR PLANNING PURPOSES ONLY

ALL PLANTING FOR WITHIN VISIBILITY SPLAYS TO BE MAINTAINED AT MAXIMUM HEIGHT OF 0.6m



ACD ENVIRONMENTAL

HEAD OFFICE
Redbridge Road, Redbridge, Essex, UK
Middletown, Essex, UK
Tel: 0206 520461

Churchyard House, 185 Lane, Colchester, Essex, UK
Tel: 0206 423776

Suite 6, Crestwood House, Highgate Lane, Eastleigh, Hants, UK
Tel: 02352 203000

email: info@acdenv.com
www.acdenvironmental.co.uk

Linden
scheme Norton Road, Thurston
(Phase 2) - 171 Units
client: Linden (Thurston) LLP
drawing: Soft Landscape Proposals
date: April 2020
scale: 1:200@A1
drawing no: LIN22824-13A (Sheet 5 of 13)
drawn IS checked HCS

Copyright of ACD Environmental Ltd. All rights reserved. No part of this publication may be reproduced, stored in a retrieval system, or transmitted in any form or by any means, electronic, mechanical, photocopying, recording, or by any information storage and retrieval system, without the prior written permission of ACD Environmental Ltd.

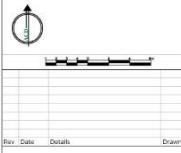
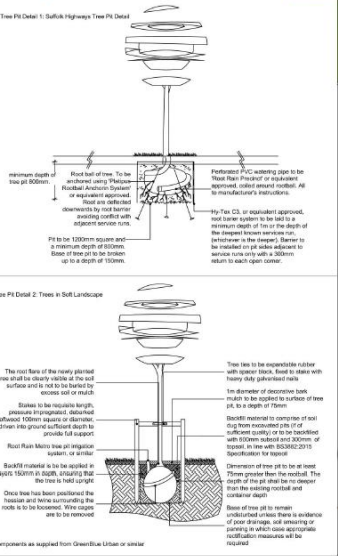
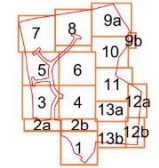


Legend

- Existing trees/hedges to be retained and protected during construction in line with arboricultural drawings
- Existing vegetation on ditch to be retained as existing, or reseeded with WFG9 Wetland and Pond Areas where bare, as supplied by Germination Seed and sown at 5g/m², or similar and approved
- Existing woodland/grassland/vegetation to be retained as existing
- Proposed tree planting within soft landscape adjacent to Principal Street. See detail 1 on sheet 3
- Proposed tree planting within soft landscape. See detail 2 on sheet 3
- Proposed specimen shrub planting
- Proposed hedge planting to be planted at 300mm centres. To be maintained at 1m height
- Hedge planting to be planted in a double staggered row 300mm apart and at 500mm centres in each row. To be maintained at 1.8m height. To be planted in groups of 5-7no. of each species
- Proposed shrub planting to receive 75mm bark mulch after planting operations
- Proposed mixed shrub planting to be planted in groups of 5-7no. of each species and as above. Note: In plot mix 1 species are to be distributed/grouped as follows: Berberis sp. to be distributed evenly throughout mix in max. groups of 3. Chrysoya sp. to be positioned to back of the planting bed
- Area to be surfaced with locally sourced clean gravel
- Proposed grass areas to receive good quality amenity grass sward laid in line with good horticultural practices, or seeding with a flowering amenity grass seed mix
- Proposed grassland areas, to be seeded with WFG21 Everyday Meadow seed mix as supplied by Germination Seed and sown at 15g/m², or similar and approved
- Proposed pollinator friendly wildflower areas, to be seeded with WFG18 Butterfly and Honeybee seed mix as supplied by Germination Seed and sown at 5g/m², or similar and approved
- Proposed native shrub mix, to be planted at 1m centres in groups of 3-6no. of each species, to receive 75mm bark mulch after planting operations
- Existing paths through open space to be retained
- Cut lines

SPECIFICATION
All works generally, to comply with the written Soft Landscape Specification.

NOTES
DON'T SCALE FROM DRAWING
NOT FOR CONSTRUCTION. FOR PLANNING PURPOSES ONLY.



ACD ENVIRONMENTAL

HEAD OFFICE
Ridgeway Rd Business Centre Orange Lane
Malmesbury SN6 6ES
Tel: 01666 616646

Courtyard House, Mill Lane, Gloscombe, GL7 1EY
Tel: 01452 842579

Suite 6, Cleveland House, Range Close, Dasthings, SO20 3JX
Tel: 02332 620500

email: mail@acdenv.co.uk
www.acdenvironmental.co.uk

scheme Norton Road, Thurston
(Phase 2) - 171 Units
client: Linden (Thurston) LLP
drawing: Soft Landscape Proposals
date: April 2020
scale: 1:200@A1
drawing no. LIN22824-13 (Sheet 3 of 13)
drawn: IS checked: HCS

Linden
Road

Copyright of ACD Environmental Ltd. All rights reserved. ACD is the copyright, design and patents holder. This drawing is the property of ACD Environmental Ltd. It is not to be used, copied, reproduced, or otherwise used without the written consent of ACD and all fees have been paid in full.

