

Condition 17

Cycle Storage

Cycle storage is provided in two locations.

The first is internally within the buggy store room which provides four cycle spaces.

The second location is to the front of the building where there are covered Sheffield stands providing ten cycle spaces. Areas are highlighted on the plan below

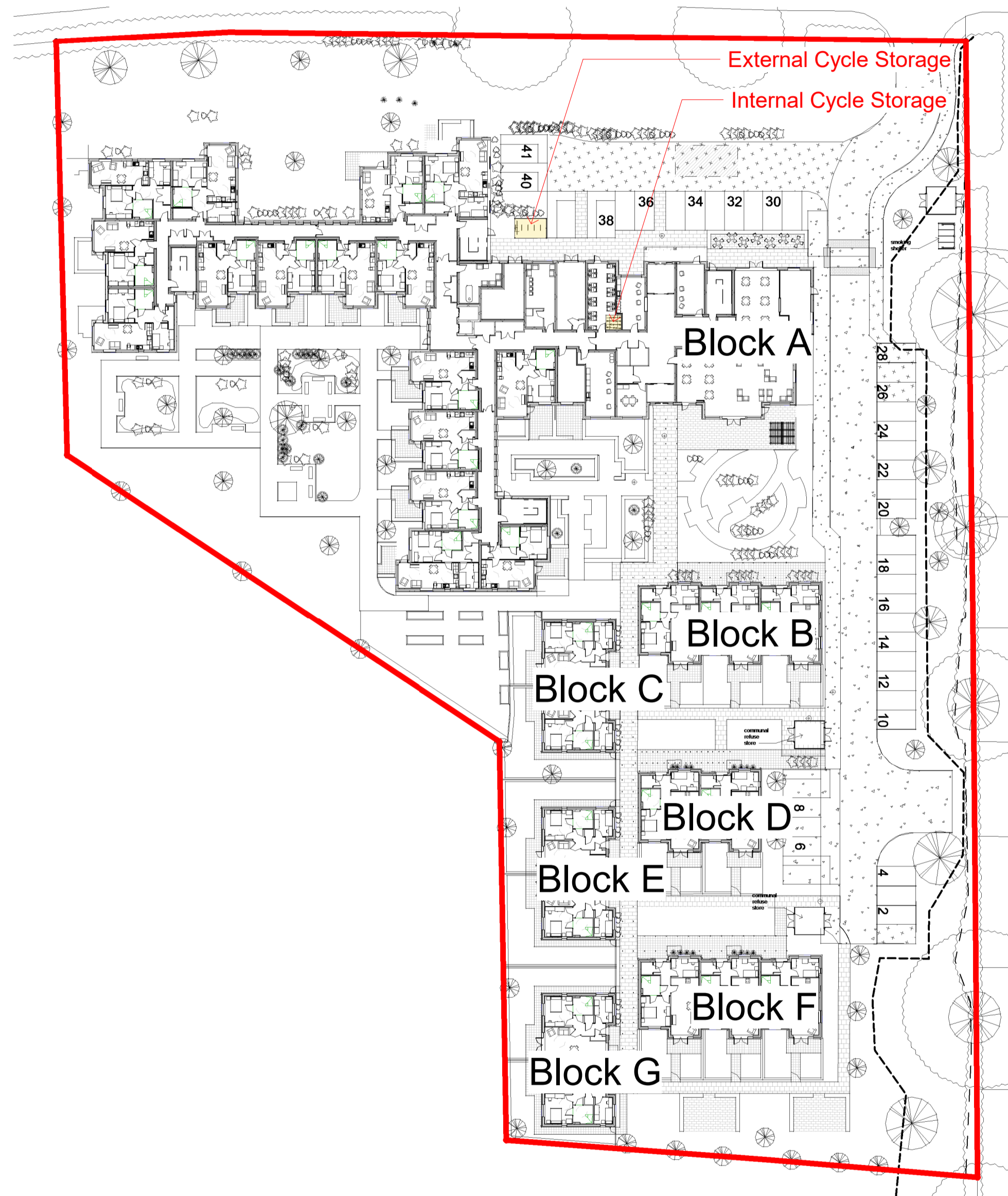
Lockers

10 lockers will be provided in the staff room.

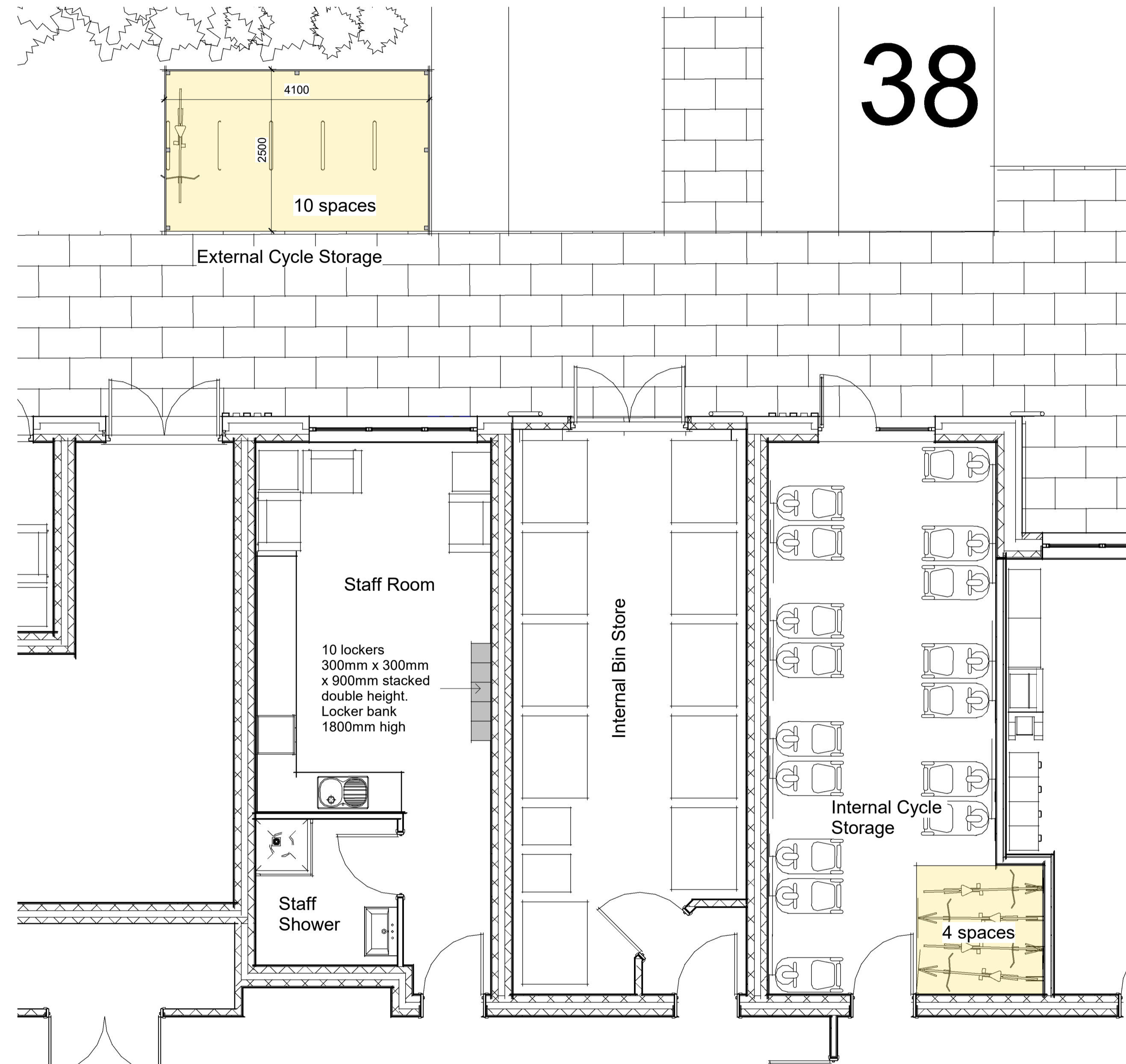
We are proposing a staff shower in the staff room refer to drawing 1071-WWA-A-ZZ-A-0700.

Terms and Conditions
 Use figured dimensions. Do not scale unless for planning purposes.
 Check dimensions on site before work commences. In case of doubt or to report discrepancies contact WWA. The accuracy of this drawing may be reliant upon third party information. No liability will be accepted by WWA for errors in or arising from such third-party information.
 © Archadia UK Ltd. This drawing is solely for the use of the intended recipient and may not be copied or reproduced without written consent except by the Planning Authority for public inspection in relation to a Planning Application and only if those copies are marked. - "This copy has been made with the authority of Archadia UK Ltd pursuant to Section 47 of the Copyright Designs and Patents Act 1988 for the purposes of public inspection only and must not be copied without the prior written permission of the Copyright owner."

Notes/Key:



1 Cycle Storage KEY
1 : 500



2 Cycle Storage
1 : 50

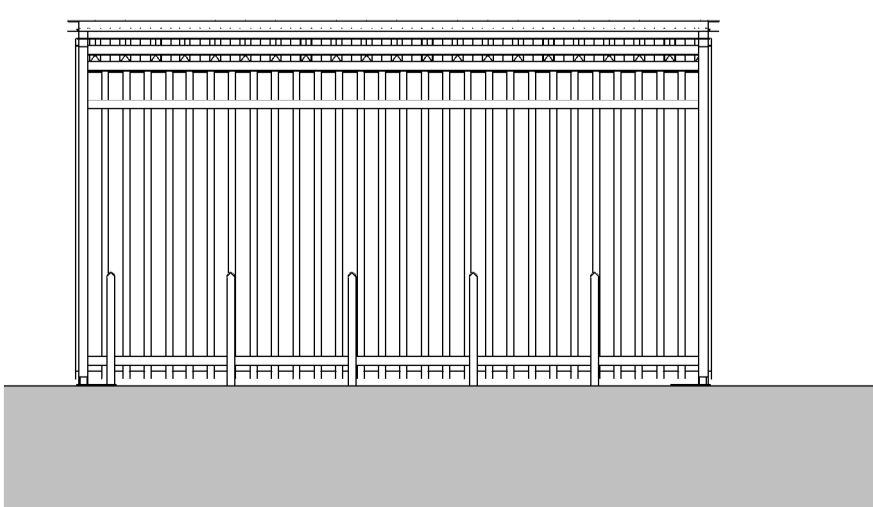
Rev	Description	Date
T1	Draft issue for comments	12-12-2022
T2	Parking adjusted. Near parking space 38	05-01-2023
T3	Locker & staff shower note added	23-01-2023

Status: TENDER

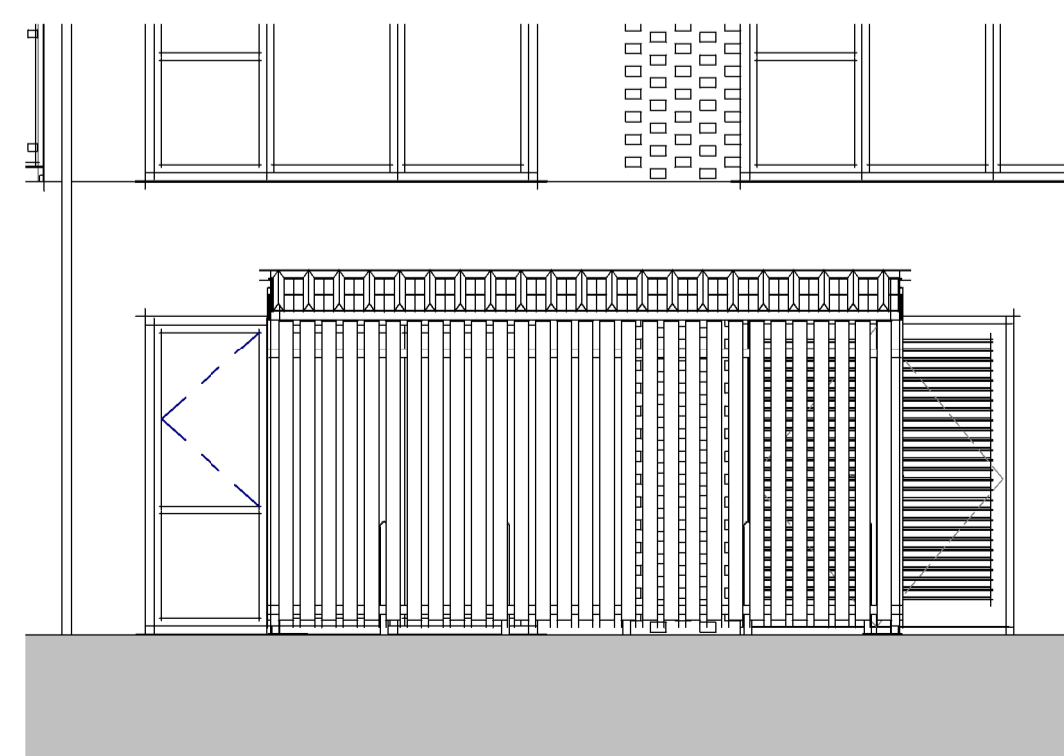


WEST WADDY ARCHADIA
 wwa-studios.com Registered in England & Wales No. 09050329

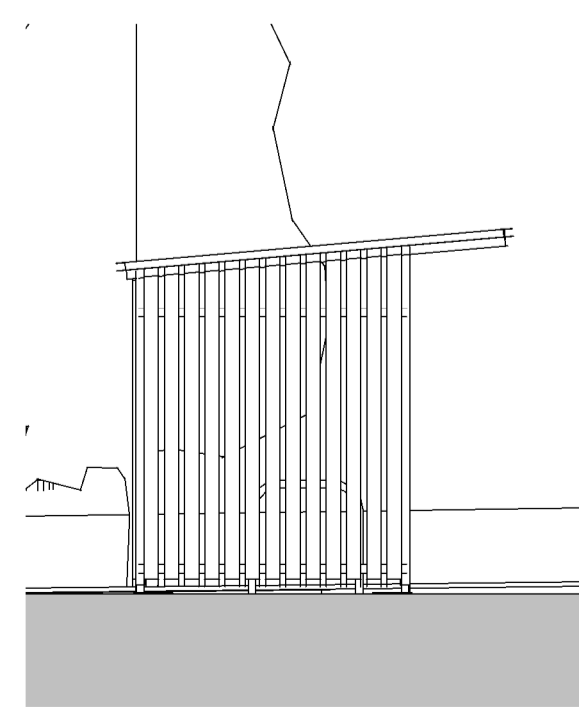
Client:	Housing 21	
Project:	Land to south side of Heath Road, Thurston	
Title:	Cycle Strategy	
Drawn by:	Checked by:	Rev:
eg	eg	T3
Scale (@A1):	Rev Date:	
As indicated	23-01-2023	
Document ID:	1071-WWA-00-ZZ-A-0162	



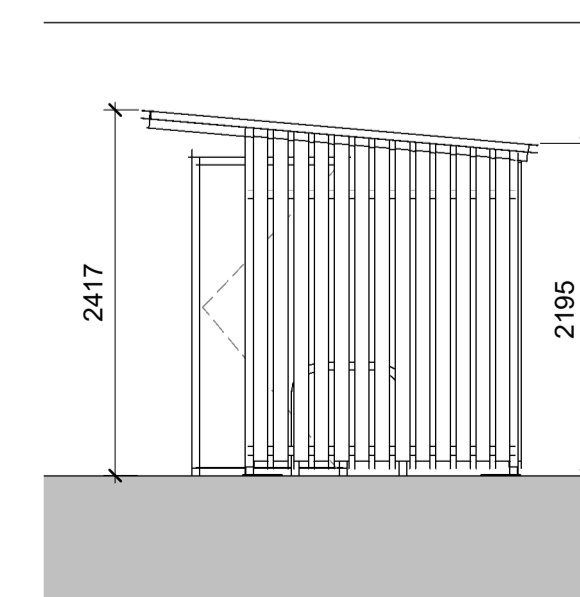
3 External cycle store - front
1 : 50



4 External cycle store - back
1 : 50



5 External cycle store - left
1 : 50



6 External cycle store - right
1 : 50

23/01/2023 15:51:21